

STRIKEPOINT GOLD

Exploring for Precious Metals in Premier Jurisdictions



November 1, 2023

TSX.V: **SKP**

OTC: **STKXF**

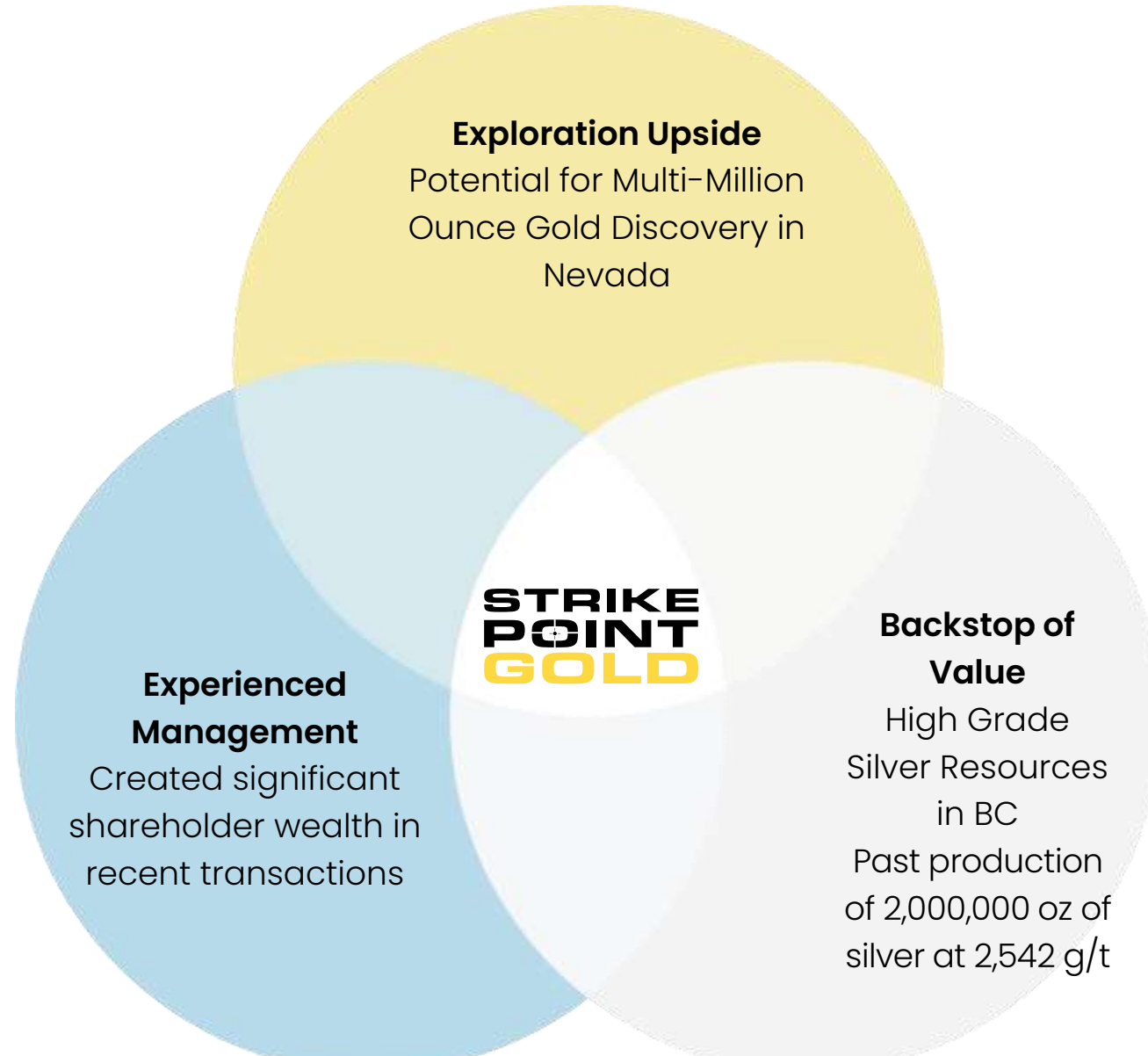
CAUTIONARY STATEMENT

On Forward-Looking Information

This presentation contains “forward-looking statements” within the meaning of applicable Canadian securities regulations. All statements other than statements of historical fact herein, including, without limitation, statements regarding exploration plans and other future plans and objectives, are forward-looking statements that involve various risks and uncertainties. There can be no assurance that such statements will prove to be accurate and future events and actual results could differ materially from those anticipated in such statements. Important factors that could cause actual results to differ materially from our expectations as well as a comprehensive list of risk factors are disclosed in the Company’s documents filed from time to time via SEDAR with the Canadian regulatory agencies to whose policies we are bound. Forward-looking statements are based on the estimates and opinions of management on the date the statements are made, and we do not undertake any obligation to update forward-looking statements should conditions or our estimates change, other than as required by law and readers are further advised not to place undue reliance on forward-looking statements. Although the Company has attempted to identify important factors that could cause actual results to differ materially from those contained in forward-looking statements, there may be other factors that cause results not to be as anticipated, estimated or intended. There can be no assurance that such statements will prove to be accurate, as actual results and future events could differ materially from those anticipated in such statements. Accordingly, readers should not place undue reliance on forward-looking statements. The Company does not undertake to update any forward-looking statements that are contained herein, except in accordance with applicable securities laws.

The technical information in this presentation on the Porter and Willoughby Project has been approved by Andrew Hamilton, P.Geo., a Qualified Person of StrikePoint Gold as defined by NI43-101. The technical information on the Cuprite Project has been approved by Michael G. Allen, P. Geo., a Qualified Person of StrikePoint Gold as defined by NI43-101.

STRIKEPOINT GOLD INVESTMENT THESIS



VISION

StrikePoint is a precious metals exploration company with a focus on select prolific mining jurisdictions. The Company is made up of an exceptional team that has built tremendous shareholder value taking projects through discovery, resource development and transactions that have been rewarding for shareholders.

On January 23, 2023, StrikePoint announced an acquisition of the Cuprite Project Located in Nevada's Walker Lane. The Company subsequently doubled the size of the property via staking to cover of any potential extensions.

Cuprite represents a low cost – high impact entry into Nevada.



Cuprite Project - **CATALYSTS**

Completed Activities

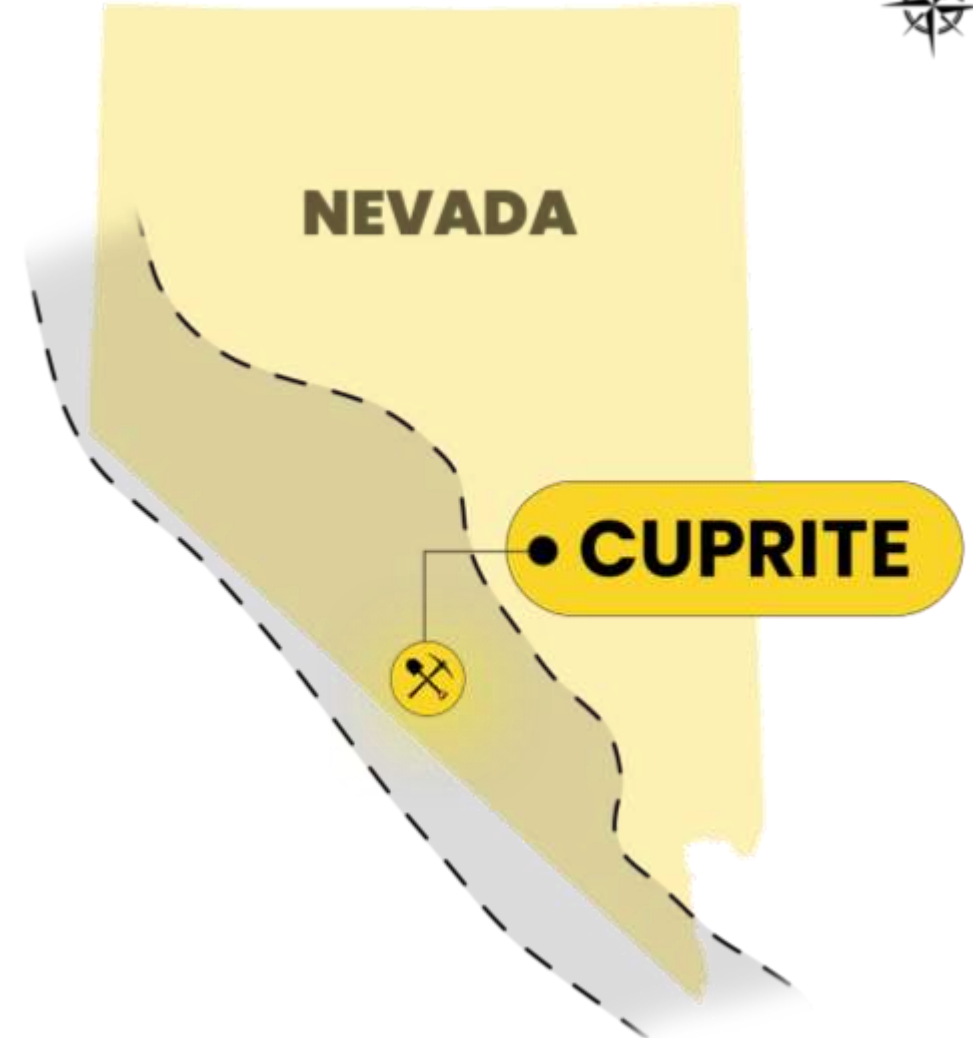
- Geophysics
- Soil Survey
- Mapping

Fall 2023

- Potentially additional geophysics
- Application for drill permits (4 weeks)

Winter 2023/2024

- Initial Drill Program



CUPRITE PROJECT

Located in Nevada's Walker Lane

- Located within a 3 hours drive from Las Vegas.
- Allows for year-round efficient exploration
- Under explored trend in Nevada
- Nevada's most recent multi-million ounce discovery located 75 kilometers to the south – AngloGold's Silicon
- Cuprite acquired due to its similarities to Silicon
- Steam heated alteration seen at Cuprite may in fact be larger than at Silicon
- Management has extensive experience in Nevada having explored the nearby Sterling Project prior to a successful corporate transaction.



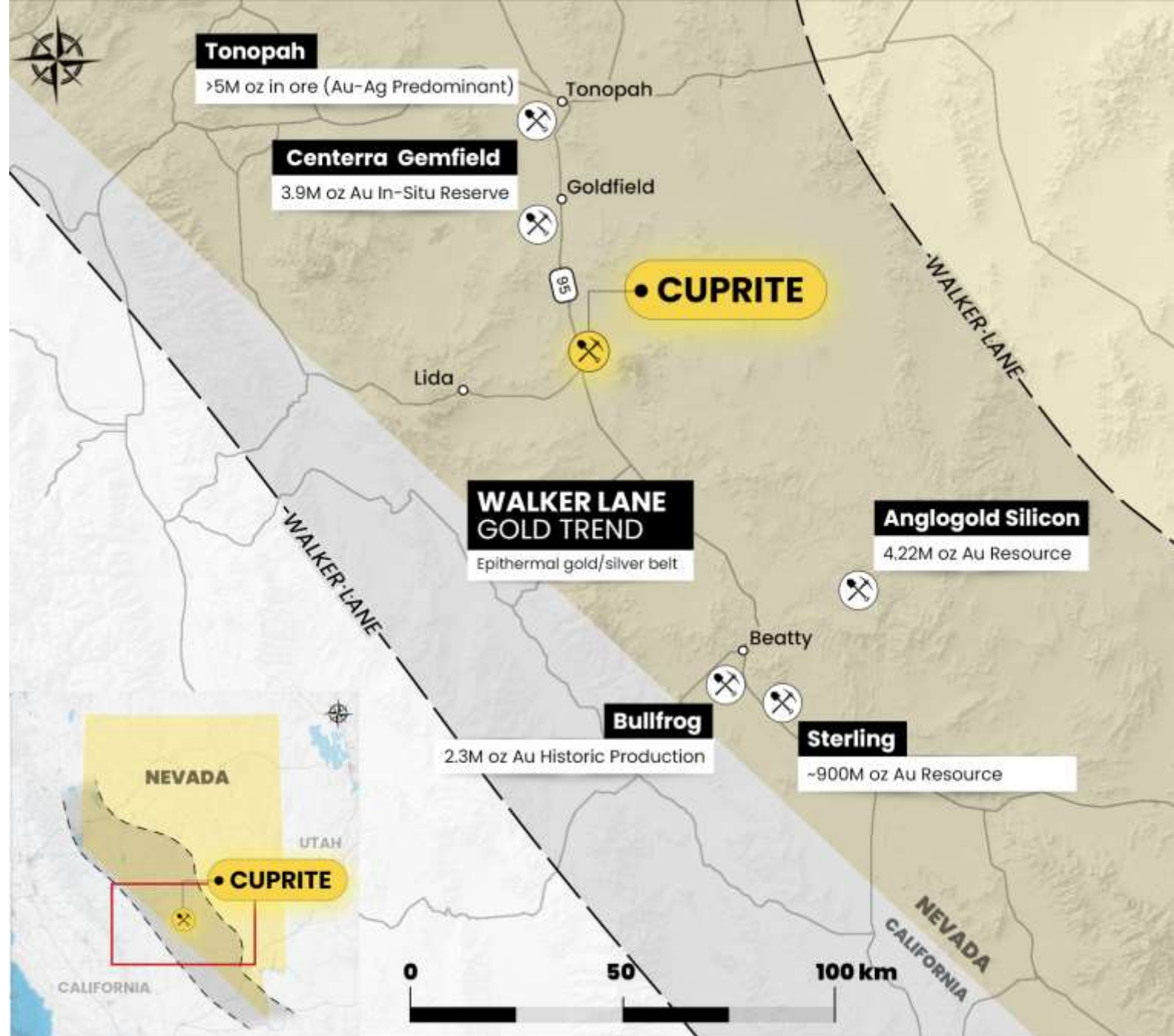
**While similar geologically to Silicon, a discovery has yet to be made at Cuprite.*

Why Nevada & **WHY THE WALKER LANE?**

- Nevada is a Tier-1 Mining Jurisdiction
- Key management expertise and success in the Walker Lane
- 2022 Significant Corporate Activity in Walker Lane:
 - AngloGold acquires Corvus Gold \$370m
 - AngloGold announces resource at Silicon Project (4.22Moz Au)*
 - Centerra Acquires Gemfield Project for \$206.5m
 - AngloGold acquires Sterling Project for up to \$200m
 - AngloGold identifies “Merlin target” with 6-8Moz Au potential

New significant discoveries continue to be made in Nevada

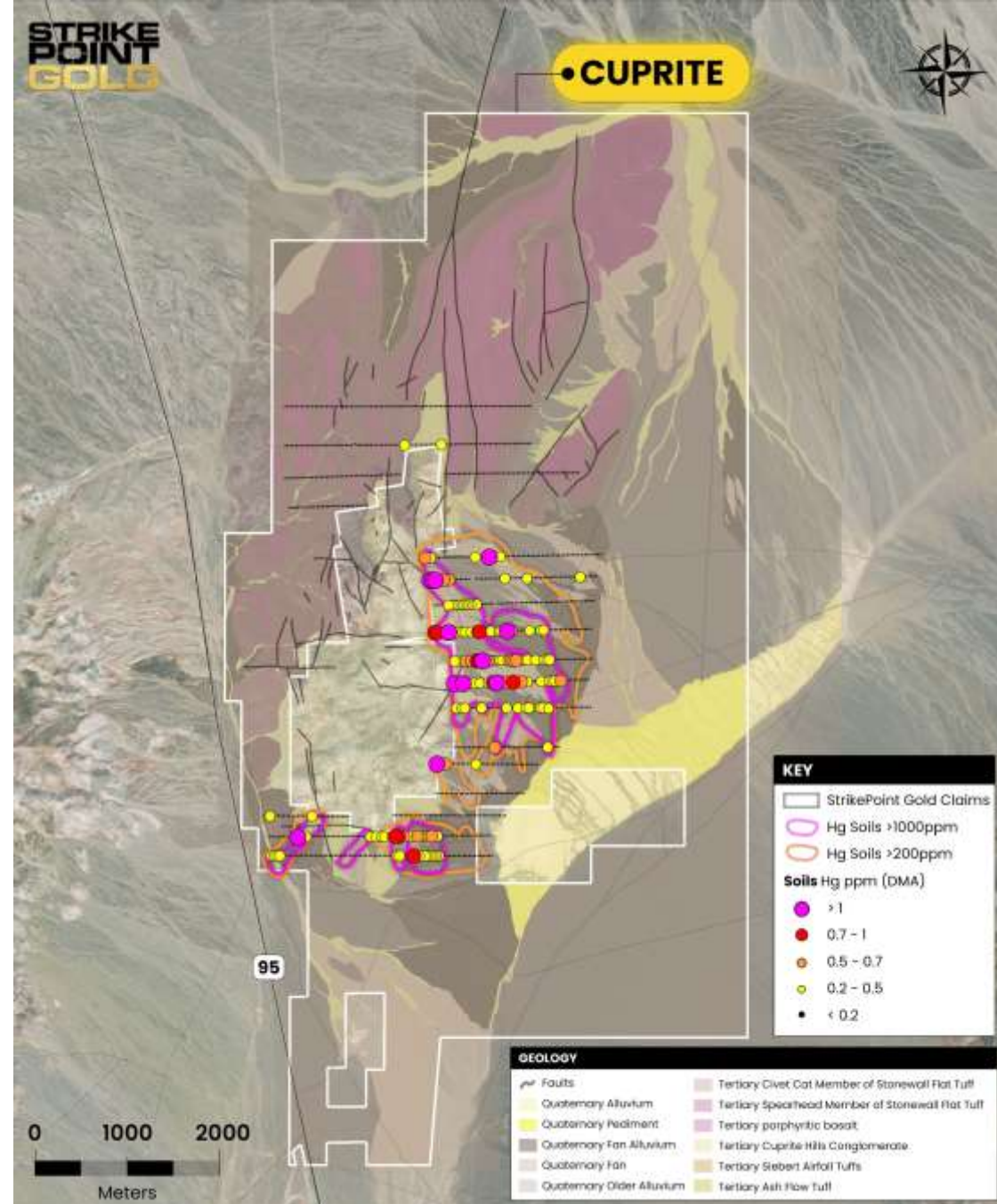
**While similar geologically to Silicon, a discovery has yet to be made at Cuprite.*



CUPRITE GEOCHEMISTRY

- 1,041 samples
- 17 lines
- 2.6 square kilometer Mercury in Soil anomaly
- Samples ranged from 0.0009 ppm to 7.4 ppm Mercury

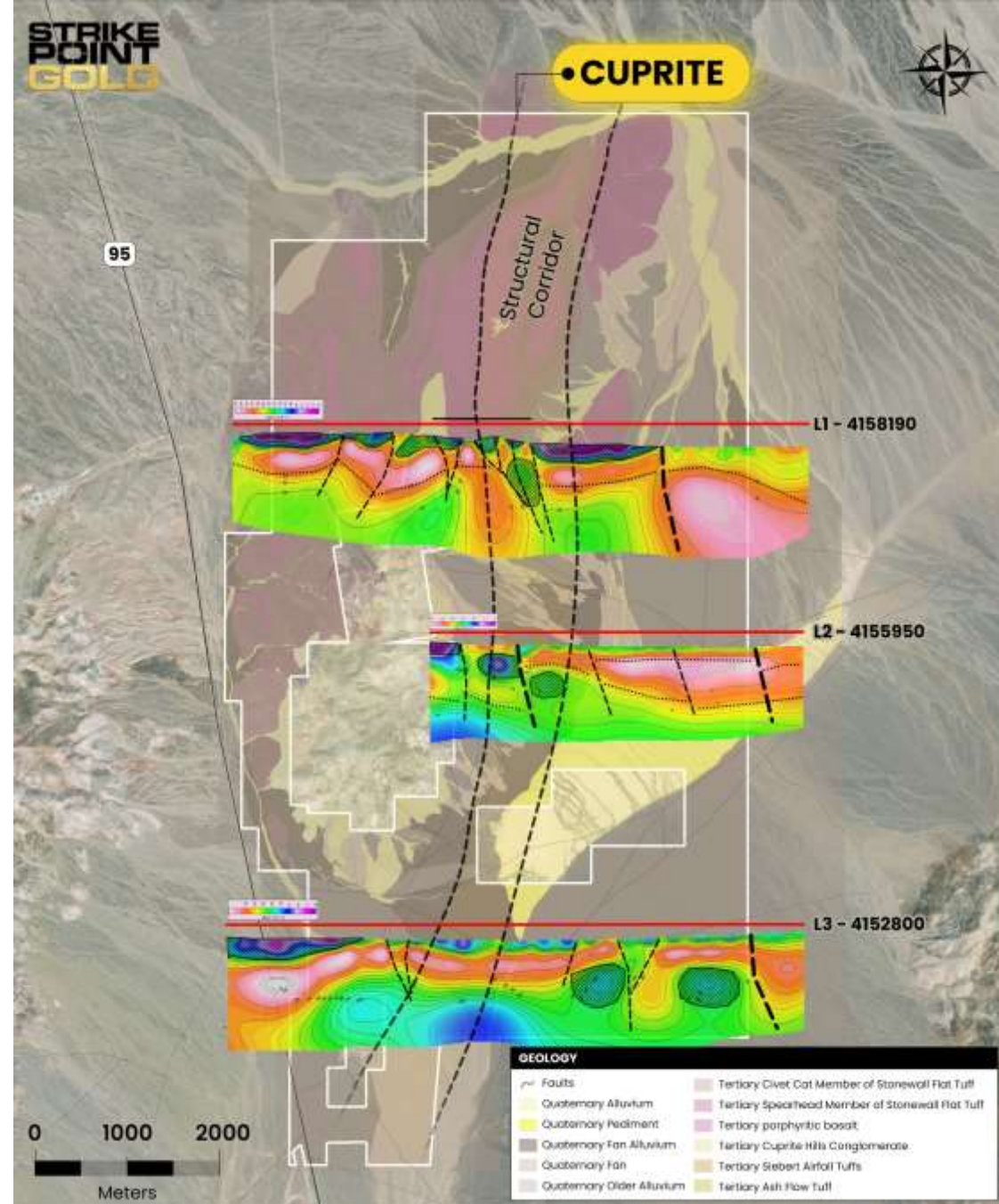
Associated arsenic and antimony anomalies slightly outbound of Mercury anomalies suggests the possibility of decaying sulphides minerals at depth.



CUPRITE RESISTIVITY

- 3 line (13.5 km) of Induced Polarization completed
- Resistivity identifies a +6 km "Structural Corridor"
- Several zones of potential silicification (mineralizing fluids)
- Silicification is offset by structures (fluid pathways)

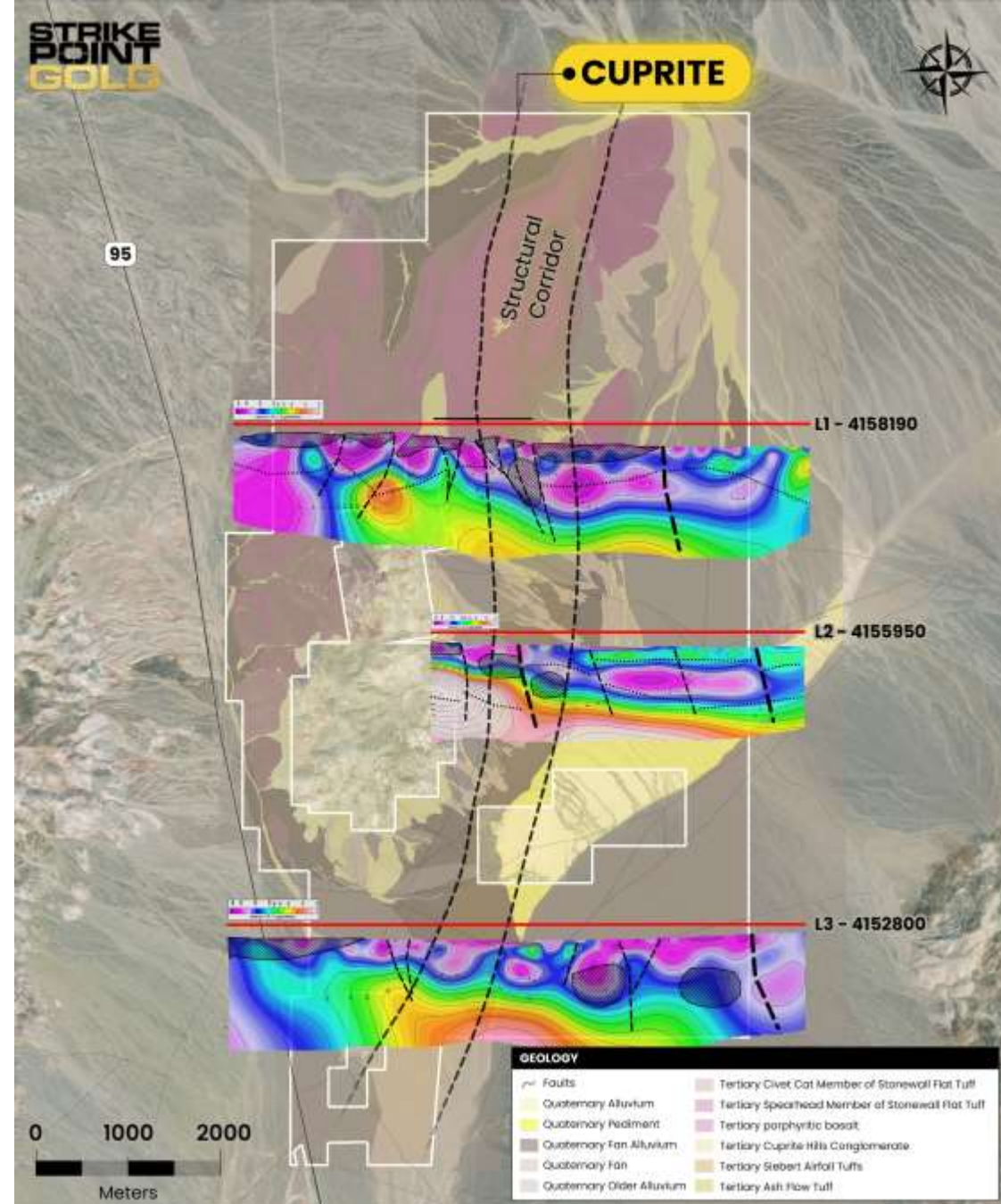
Structural setting similar to AngloGold's Silicon Deposit (4.22 Moz Au) located ~75km to the south.



CUPRITE CHARGEABILITY

- 3 line (13.5 km) of Induced Polarization completed
- Chargeability highs coincident with structures
- Chargeability highs can be caused by sulphides (metal) at depth

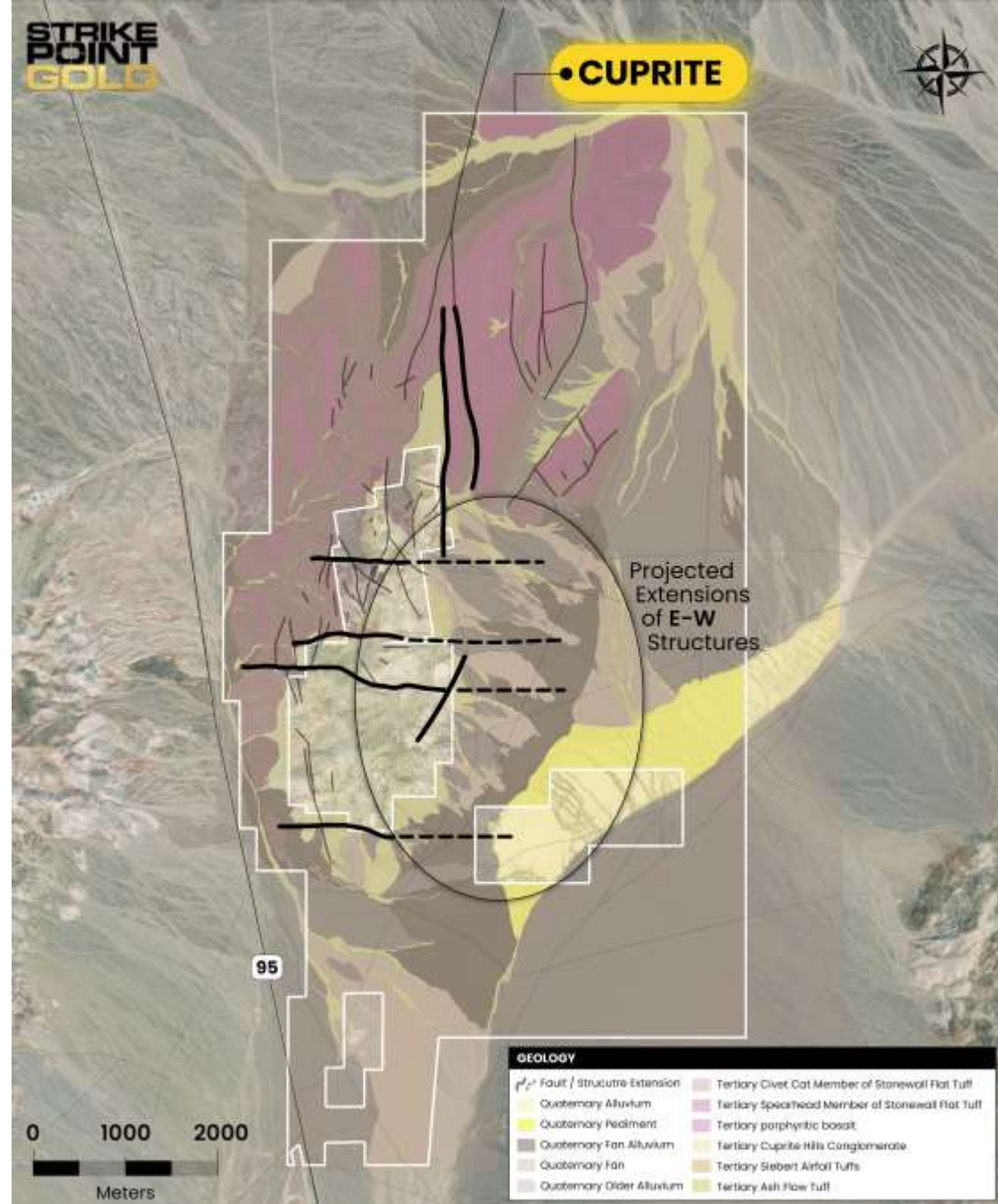
Like Angold's 4.22 Moz Au Silicon Deposit, and Centerra's 3.9 Moz Au Gemfield Deposit, Cuprite occurs on the western flank of a large-scale caldera (ancient volcano)



CUPRITE GEOLOGY

- Multiple E-W structures project into the Mercury Anomaly
- Intersect the Geophysical Structures
- Intersection of structures can be fluid conduits for mineralization
- Potential host rocks down dropped to the east.

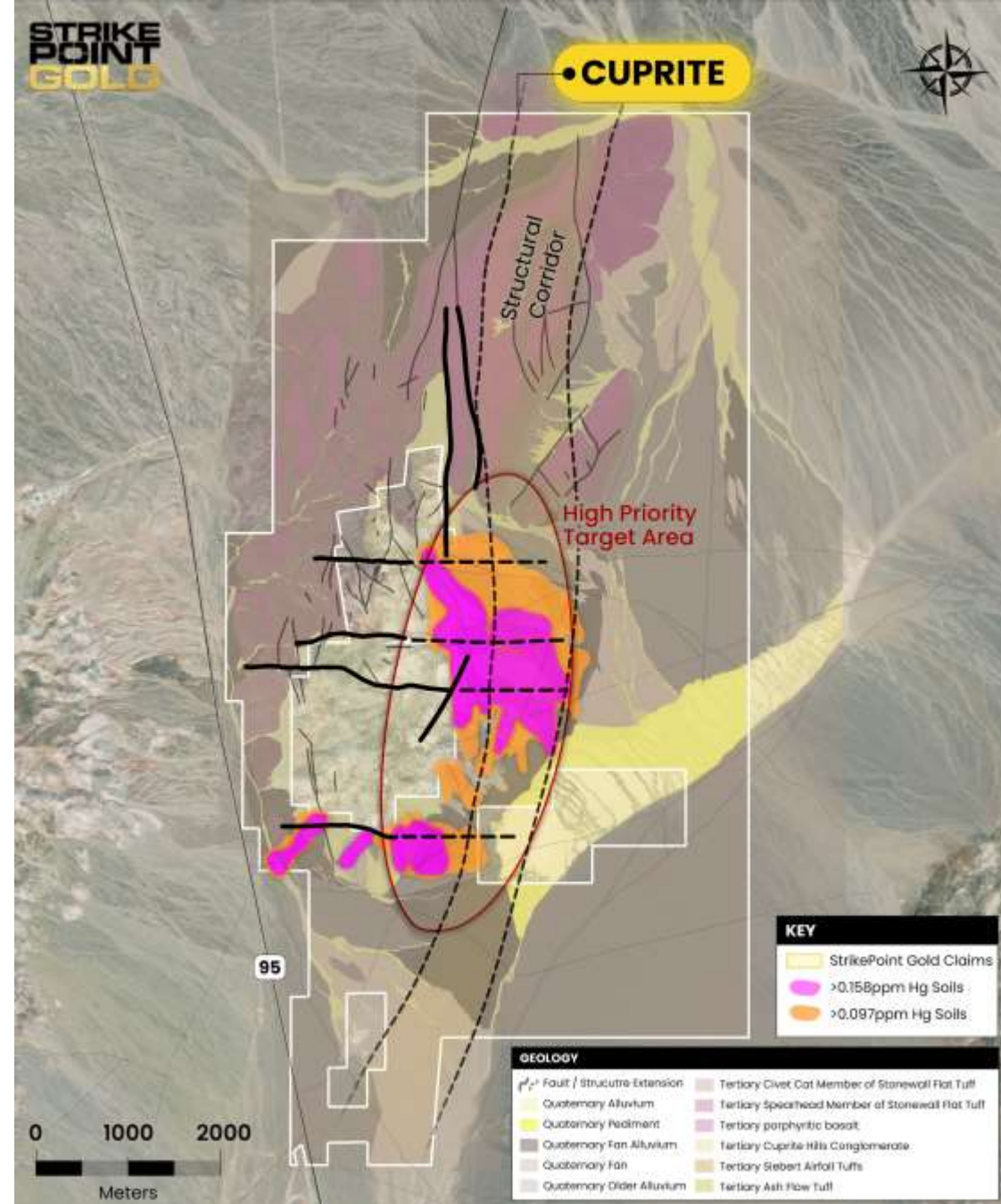
The alteration signature at Cuprite is similar in tenure as surface to the AngloGold's Silicon Deposit. -Except the alteration footprint at Cuprite is larger!



CUPRITE LARGE SCALE TARGET

- Geology, geophysics and soils create large scale coincidental targets
- Projected East-West Structures
- Geophysics identify large scale caldera structures
- Where structures intersect a significant high grade soil anomaly occurs

Crossing of Geophysical and Mapped structures give ample ground preparation for mineralizing fluids potentially manifesting as a 2.6 square kilometer soil anomaly



CUPRITE PROJECT

Cuprite
Silicon Discovery Similarities*

- Walker Lane location
- Similar heat source for mineralization
- Multi-square kilometer alteration zones
- Extensive Silica and Mercury at surface
- Similar structural Setting

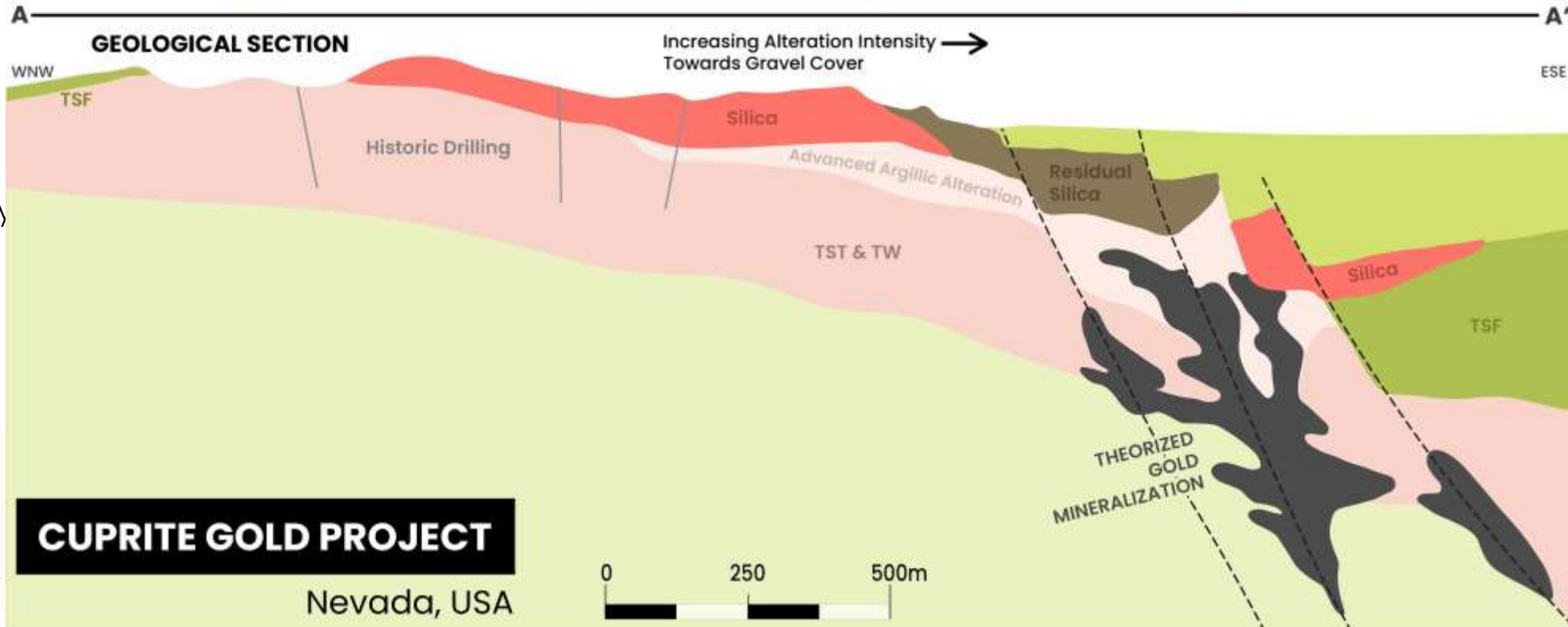
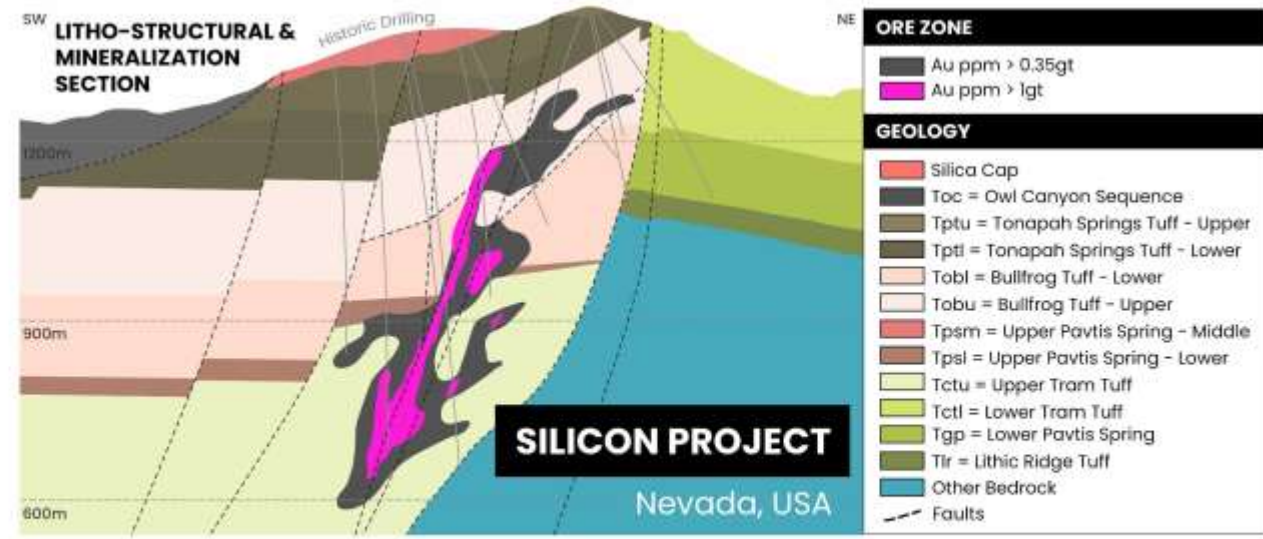
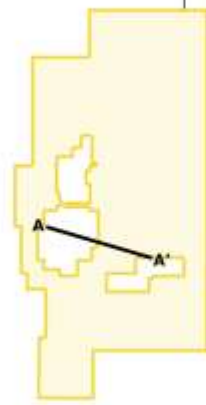
**While similar geologically to Silicon, a discovery has yet to be made at Cuprite.*

Silicon showed virtually no gold at surface, but targeted drilling at depth lead to possibly the most significant discovery in Nevada since Frontier Gold's Long Canyon!

STRIKEPOINT GOLD

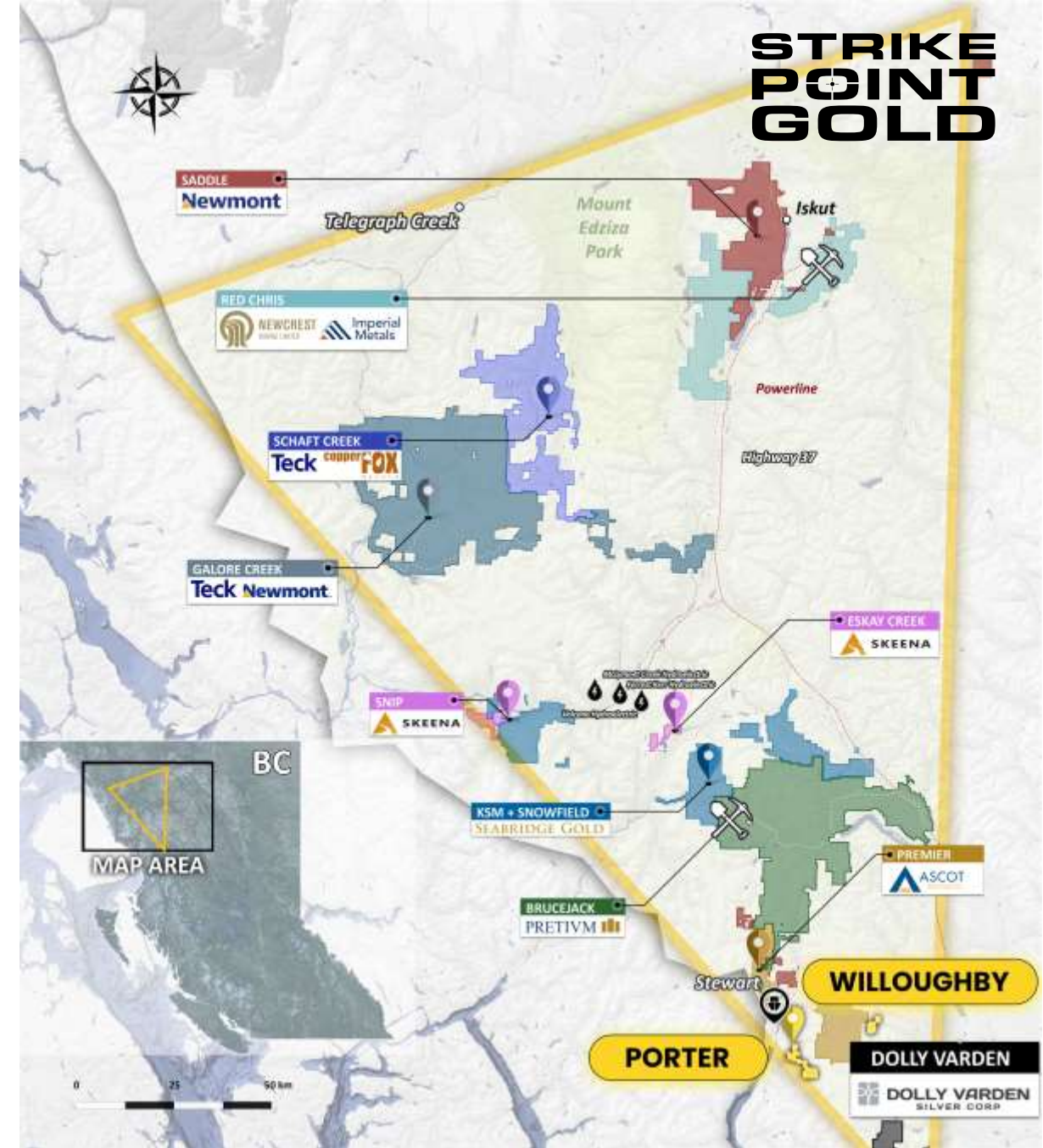
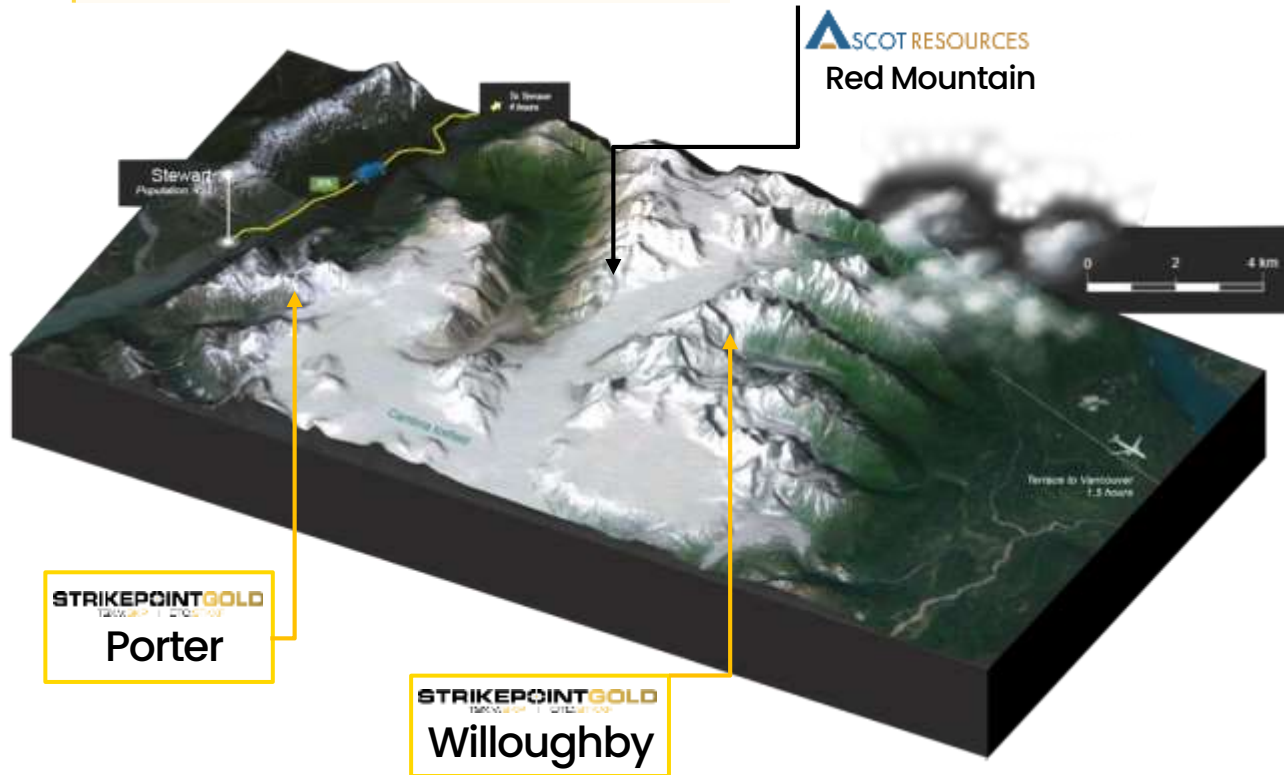
Silicon Analog

• CUPRITE



THE GOLDEN TRIANGLE

StrikePoint Gold Inc. retains high-grade gold & silver projects in northwest British Columbia.



PORTER SILVER PROJECT

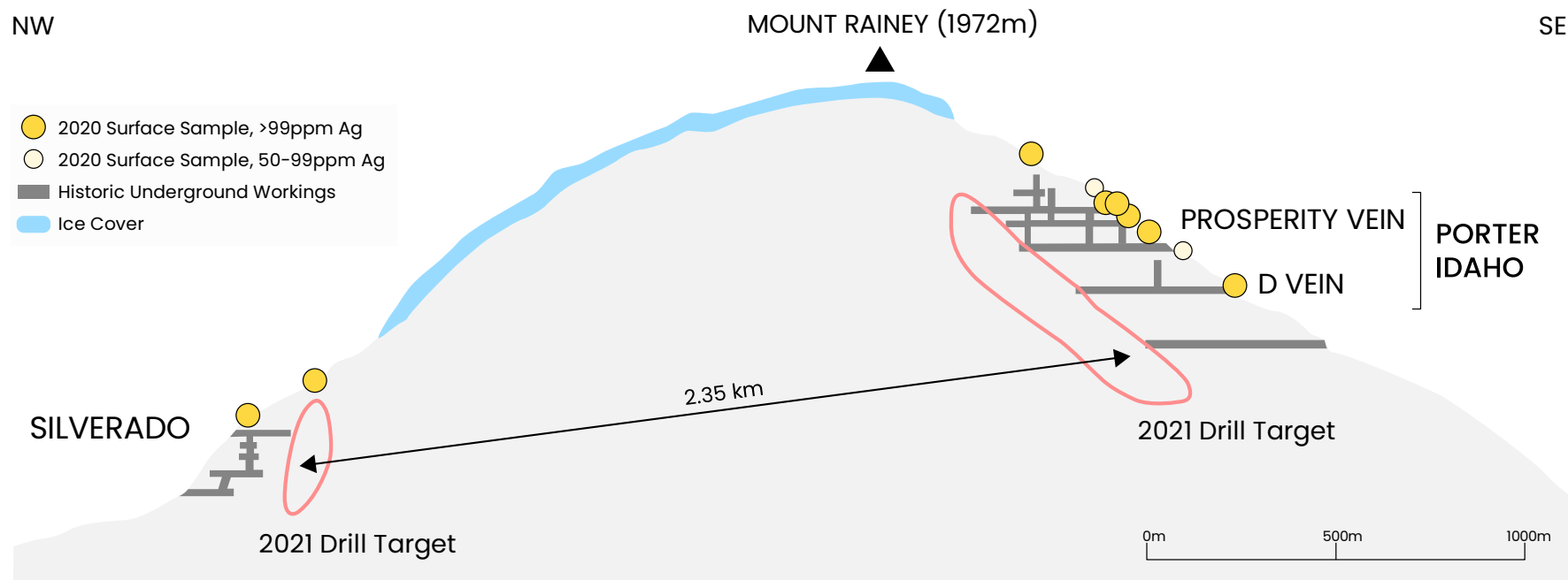
2,350 Metre Unexplored Area

A 2,350 metre unexplored area exists between the past producing Silverado and Porter-Prosperity mines. Veins at both sites run at a similar orientation, therefore it is hypothesized that the system may be continuous under the peak of Mount Rainey.

An NI 43-101 Technical Report completed in 2012 by Dr. Nick Carter, P.Eng. and estimated silver resources using values from Porter's Prosperity and D veins.

| Porter Project: Historical Resource Estimate* | | | |
|---|---------|----------------|-----------------|
| @ 170 g/t Ag cut-off | | Average Grades | Contained Metal |
| Category | Tonnes | Ag (g/t) | Ag (oz) |
| Indicated | 394,700 | 868 | 11,000,000 |
| Inferred | 88,900 | 595 | 1,700,000 |

- Past production of 2,000,000 oz of silver at 2,542 g/t ending in 1931 (silver only, not silver equivalent)
- Acquired from Skeena Resources Limited in 2019



*The Company considers this estimate as historic in accordance with NI43-101.

WILLOUGHBY GOLD SILVER PROJECT

A Rich & Extensive Database

119 Historic diamond drill holes (1989 to 1996) totalling 12,302m

- 89 Surface diamond drill holes
- 30 Underground diamond holes
- 1,356 Surface samples between 1989 and 2008

110 meters of underground exploration workings (1995-1996)

StrikePoint Exploration (2019 to 2022)

- 40 Surface diamond drill holes totalling 9,237m
- >600 Surface samples between 2019-2022



**STRIKE
POINT
GOLD**

KEY MANAGEMENT



Michael G. Allen – President, CEO and Director

Mr. Allen was President, CEO and Director of Northern Empire Resources, where he was responsible for identifying, acquiring and advancing the Sterling Project in the Beatty district of Southwest Nevada. Mr. Allen guided Northern Empire from a ~C\$15m market cap to an acquisition by Coeur Mining at the all-time high share price and a market capitalization of ~C\$120m. The Sterling Project was recently sold for US\$150m to AngloGold Ashanti as they consolidate the Beatty district.



Shawn Khunkhun – Executive Chairman and Director

Mr. Khunkhun has over 20 years of experience in capital markets, mineral exploration and development sector. As Executive Chairman, Mr. Khunkhun is involved in the company's marketing, financing and corporate development. He has developed long-standing relationships with an extensive network of high net worth retail and institutional investors, analysts, brokers, investment bankers and private equity groups. Mr. Khunkhun has facilitated over \$1B in capital raises, has a significant history of successful M&A and a track record of delivering shareholder value. Mr. Khunkhun is also the CEO & Director of Dolly Varden Silver and on the board of Goldshore Resources.



Adrian Fleming – Director

Mr. Fleming is a Geologist with over 40 years international experience in exploration, project development and mine operations. He has been a member of, or led teams that made gold discoveries at Porgera, PNG; Big Bell, WA; Gross Rosebel, Suriname; Hope Bay, Canada; and White Gold, Yukon, Canada. Adrian was a founding director of Northern Empire Resources and is a director of several other exploration companies.

LEADERSHIP

A RELIABLE, FOCUSED, AND DRIVEN TEAM

MANAGEMENT

MICHAEL G. ALLEN, P. Geo

President CEO & Director

SHAWN KHUNKHUN

Executive Chairman & Director

PAULO SANTOS

Chief Financial Officer

DIRECTORS

ADRIAN FLEMING

Director

IAN HARRIS

Director

DARRYL JONES

Director

ADVISORS

ROB MCLEOD, P. Geo

Technical Advisor

ANDREW HAMILTON, P. Geo

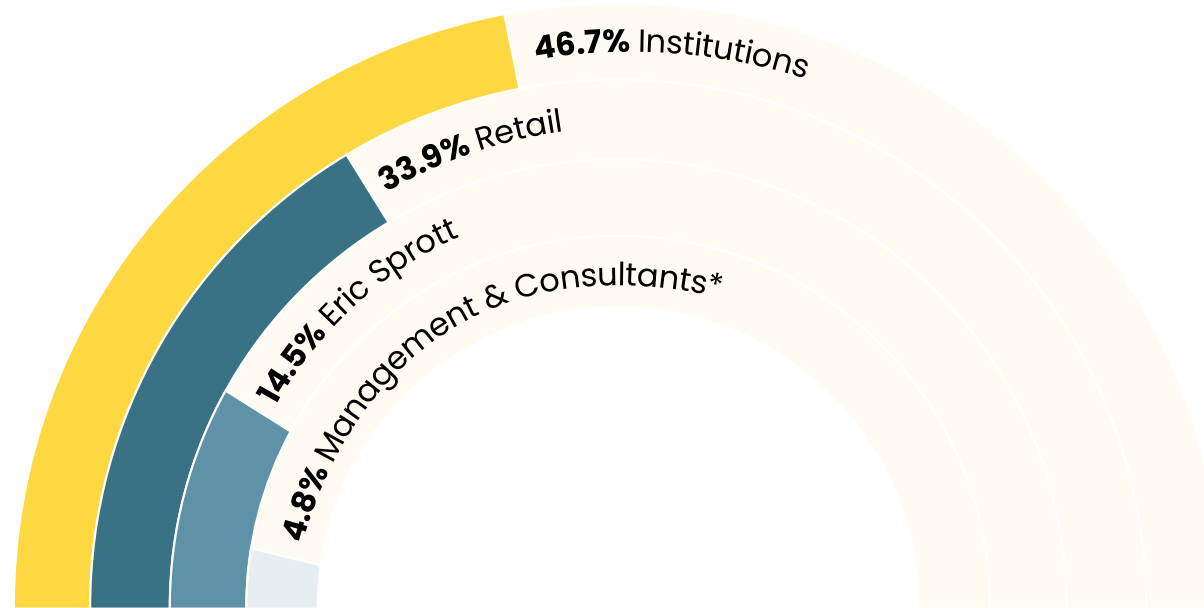
Technical Advisor

RYAN WEYMARK, P. Eng.

Technical Advisor

SHARE STRUCTURE

& Stock Information



** Including: Delbrook, Crescat, US Global, Redplug, Gold 2000, Dundee, Extract, Middlefield, Sprott*



213.78 Million

Shares Issued



C\$11.0 Million

Market Cap



~C\$2.75 Million

Cash and Marketable Securities
As of July 1, 2023

STRIKEPOINT GOLD

TSX.V: **SKP** OTC: **STKXF**

www.strikepointgold.com

+1 (604) 602-1440
info@strikepointgold.com

Suite 3123 – 595 Burrard Street
Vancouver, BC, V7X 1J1